



# Green Reefers

www.greenreefers.com

## M/V «Green Nova»



The vessel is fully grating fitted and is built for a high flexibility for shipment of chilled/frozen cargo of both palletized and loose configuration.

The vessel's high square meter space allows for maximum utilization of vessels cubic capacity.

The cranes, the hatch-design and the decks without stanchions allow for fast and efficient cargo operations including transshipment operations

Equipped with a bow thruster, the need for tugs in port may sometimes be reduced, making the vessel cost effective.

### Cargo Capacity

Comp.	Cubic ft	SQM	Height
1HD	3.689	36	2,20
2HD	3.716	46	2,20
3HD	3.722	46	2,20
4HD	3.722	46	2,20
1A	19.522	208	2,20
2A	23.541	268	2,20
3A	24.162	280	2,20
4A	24.100	277	2,20
1B	17.317	177	2,20
2B	22.751	258	2,20
3B	24.443	287	2,20
4B	23.713	269	2,20
1C	13.493	145	2,20
2C	19.809	211	2,20
3C	23.351	262	2,20
4C	20.538	209	2,20
<b>Total</b>	<b>271.589</b>	<b>3.022</b>	

### Container Capacity

	TEU	or FEU
Deck	12	6
Holds	-	-
<b>Total</b>	<b>12</b>	<b>6</b>

Equipped with 12 reefer plugs.

### Tonnage/capacities

DWT	6.455 tons
GT	5.224 tons
NT	3.150 tons
Cubic	271.589 cbft
Sqm u. deck	3.022 Sqm

### Main particulars

Built	1992
LOA	115 meters
Beam	17,80 meters
Draft	7,75 meters
Main E.	5.500 bhp
Speed	17,5 knots

### Tank capacities

IFO	984 cbm
MGO	138 cbm

### Hatches

All hatches to all holds/compartments have free opening of minimum 6,20 x 7,40.

### Cranes:

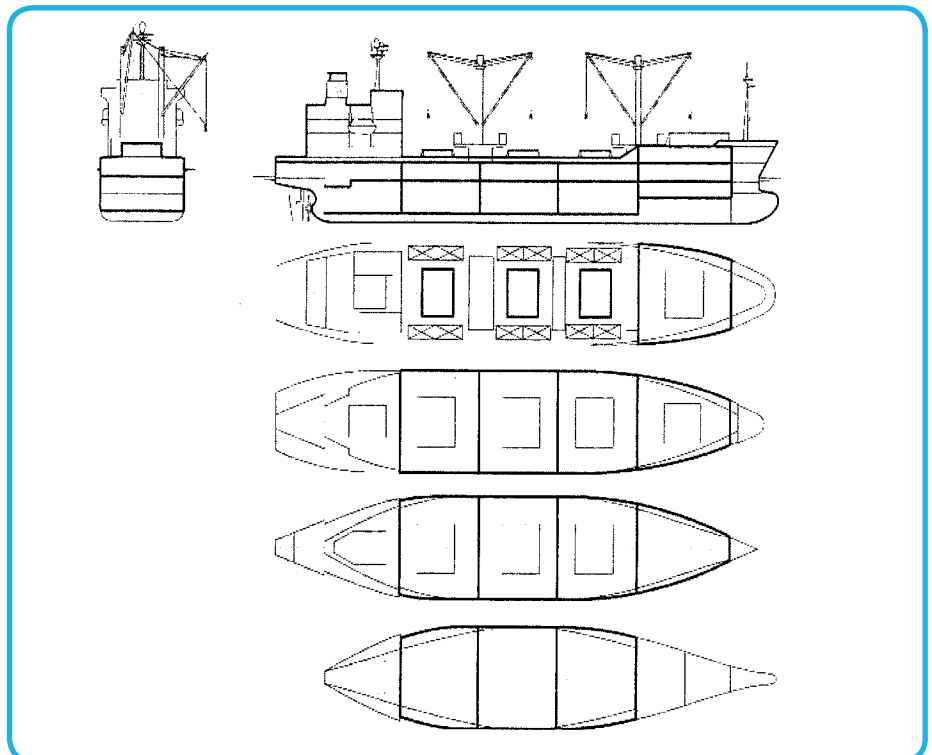
8 Derrick SWL 5 mt, U/P 5 mt.

### Temperatures

9 separate cooling sections, with sufficient compressor capacity for keeping -25 to +15 degrees Celsius.

### Ventilation

Air changes per hour: 90  
Air renewal per hour: 4



Vessels particulars believed to be correct but not guaranteed